

# DELTA BETWEEN TALENTS AND JOBS



JOB in pharma (life sciences/chemistry)

TALENT

**BRIDGE THE TALENT DELTA  
WITH THE  
MASTER APPLIED MOLECULAR SCIENCES**

**Andrea Thiele**

**HAN University of Applied Sciences**

# TEACHING TAILORED EMPLOYABILITY SKILLS

**Research specialists  
in life sciences  
or chemistry**



**Project management**

**Business development**

**Regulatory**

Intern/employee works on innovation projects for 2 years

# BRIDGING THEORY AND PRACTICE

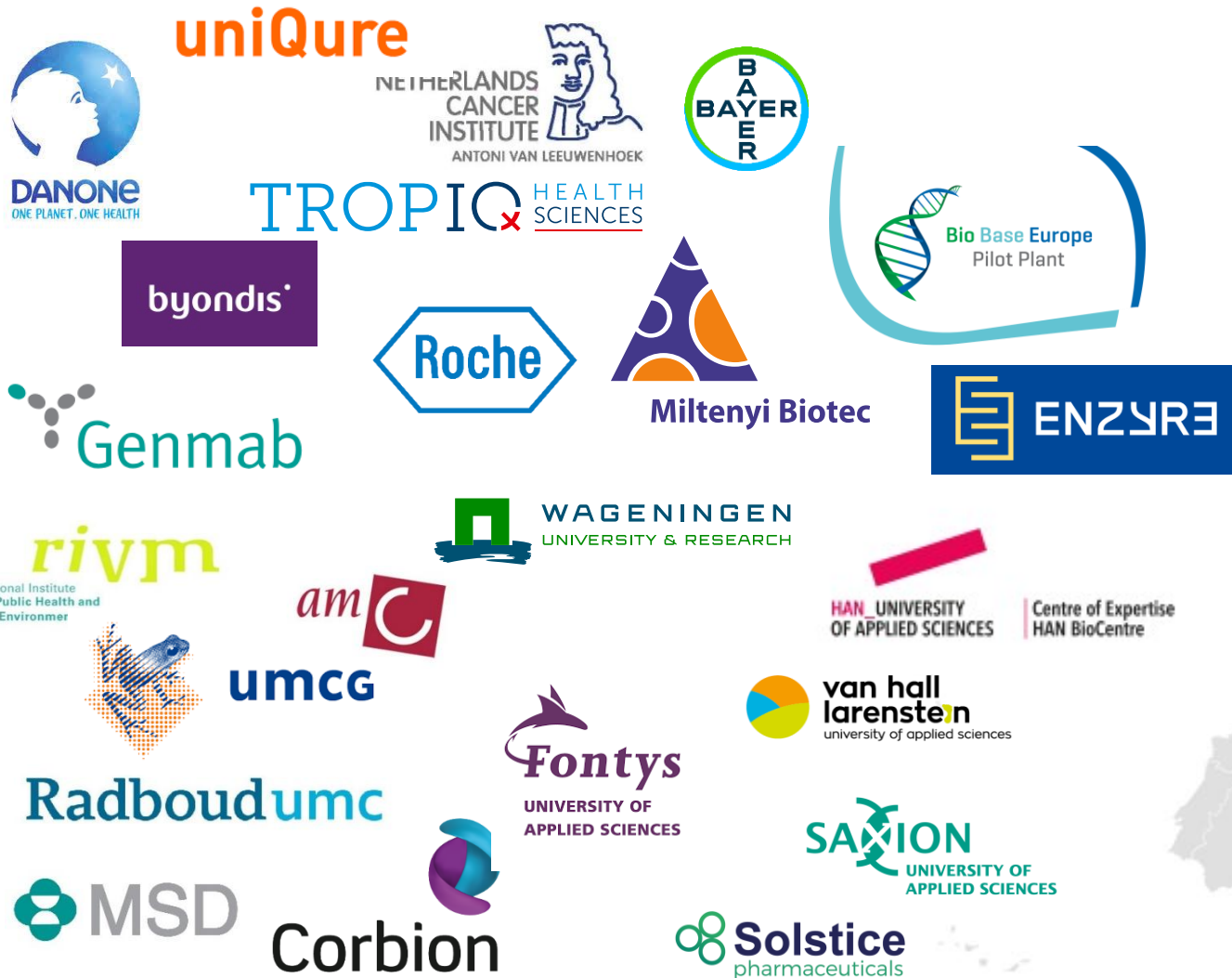
Supporting program at HAN



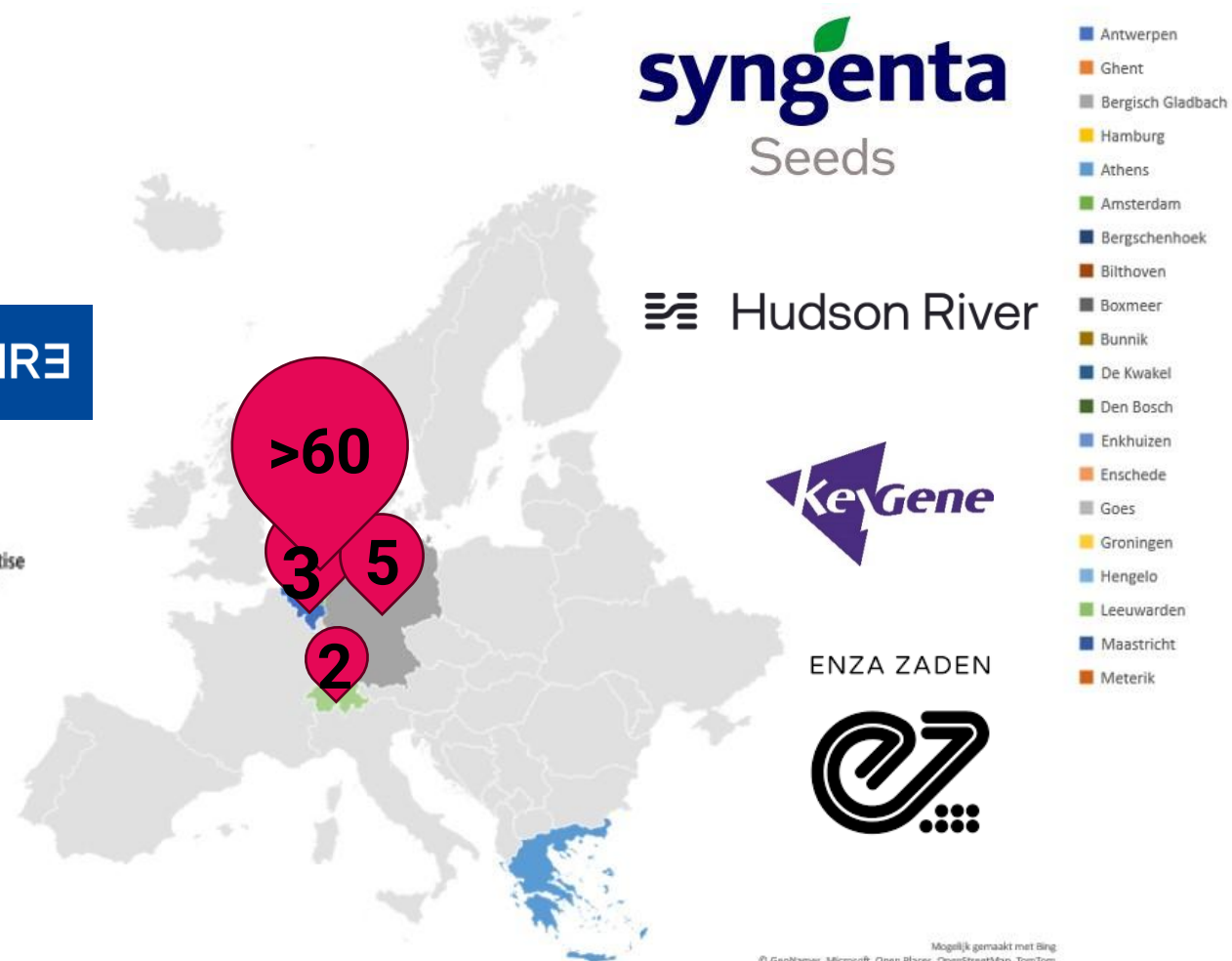
# HUMAN CAPITAL WITH DIRECT ADDED VALUE TO YOUR INNOVATION PROJECTS



# PARTICIPATING ORGANIZATIONS



Placement locations



ENZA ZADEN



# JOIN US

## Linked IN network group



- Discuss possibilities; leave you contact details with one of us today.
- Join network group at LinkedIn and post your needs.
- Mail us: [master.mls@han.nl](mailto:master.mls@han.nl); [master.chemistry@han.nl](mailto:master.chemistry@han.nl)

# BRIDGE THE TALENT $\Delta$ WITH THE MASTER APPLIED MOLECULAR SCIENCES



JOB in pharma (life sciences/chemistry)

TALENT