

Networking event

Ellen van Geffen and Lisan Scholten

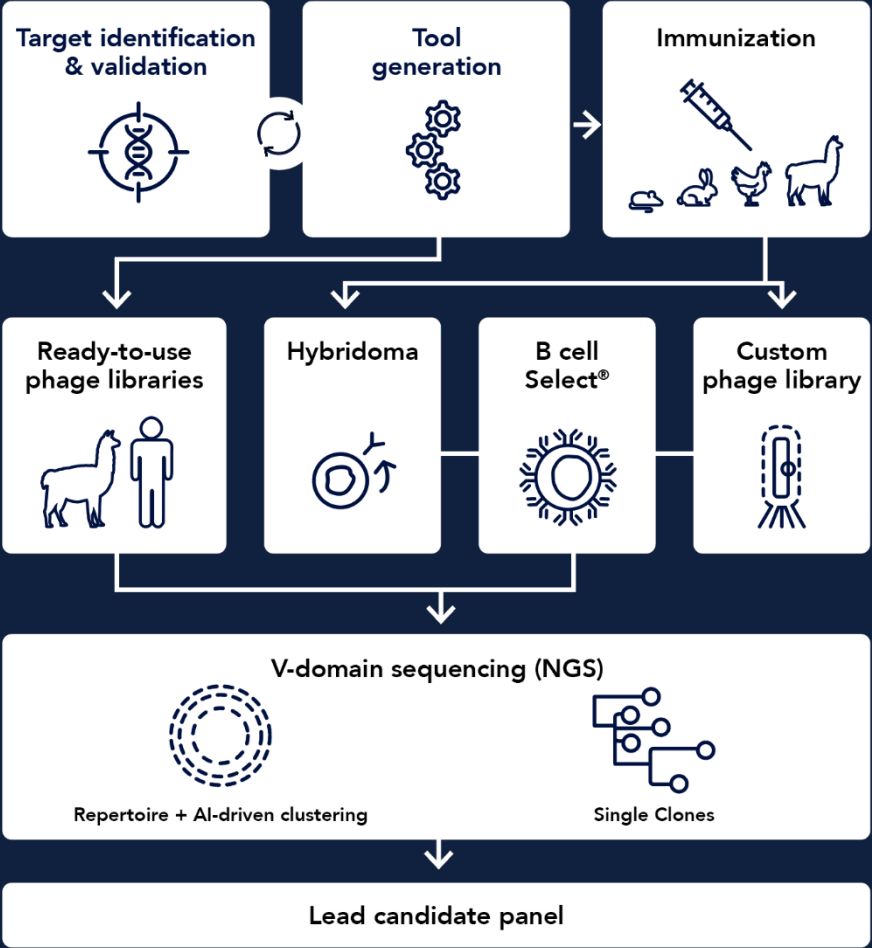
The company – ImmunoPrecise Antibodies



Fully-integrated antibody discovery and development



Discovery



Meet the Team

Experienced experts

- 23 employees

Cell culture
team

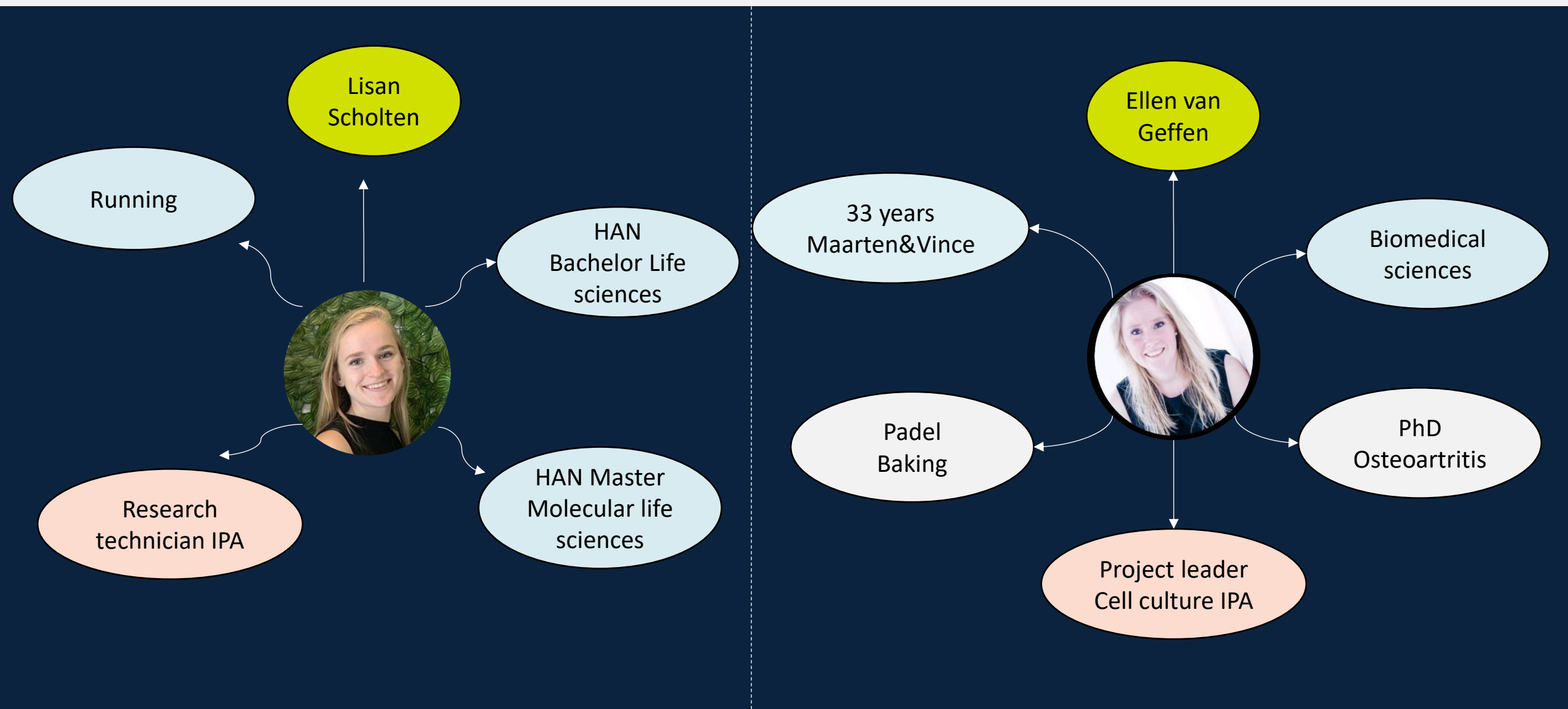
Molecular
team

Production
team

Sales team



About us



Master's student collaborating with IPA

Client projects versus
Internal research

Fresh perspectives and
innovative ideas

Early access to young
talent

Flexible

Cost-effective

How did I find my internship at IPA



2021 - Graduation internship

BACHELOR LIFE SCIENCES



2021 – Start Master

MASTER MOLECULAR LIFE SCIENCES

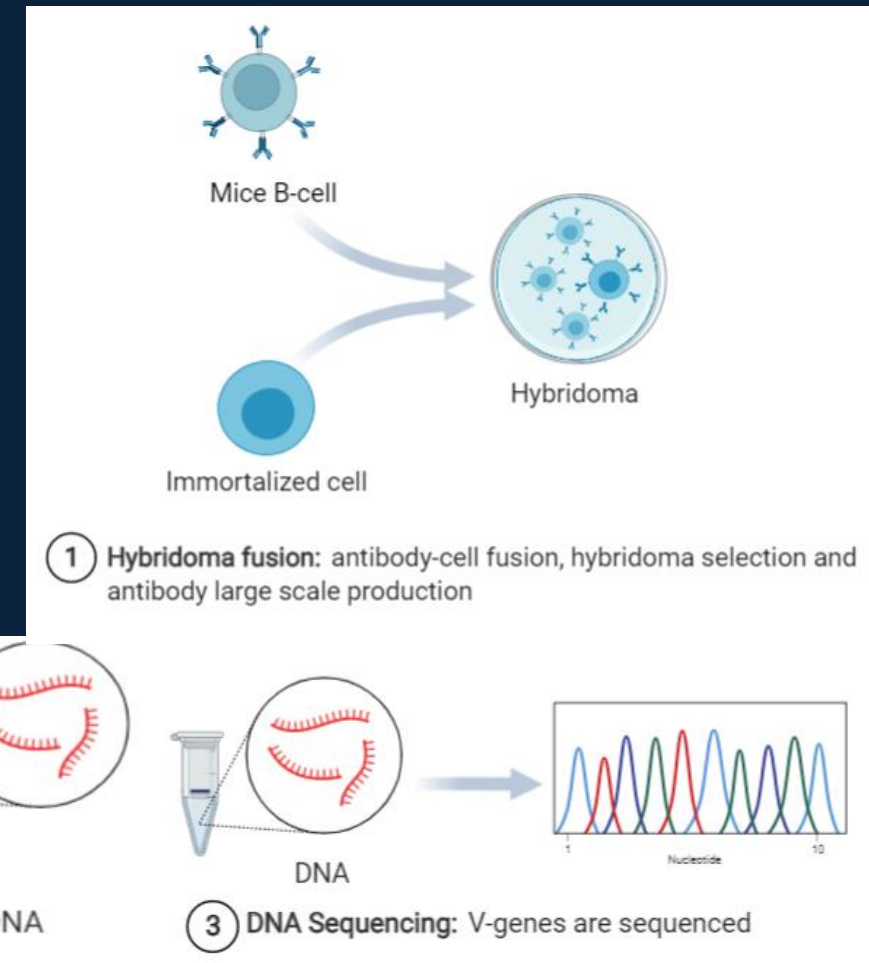
The internship project

Project #1 – First 1.5 years of the internship

Accelerated molecular cloning

Involved:

- PCR
- Gibson assembly
- Agarose gel electrophoresis
- Sanger sequencing
- Protein production and purification

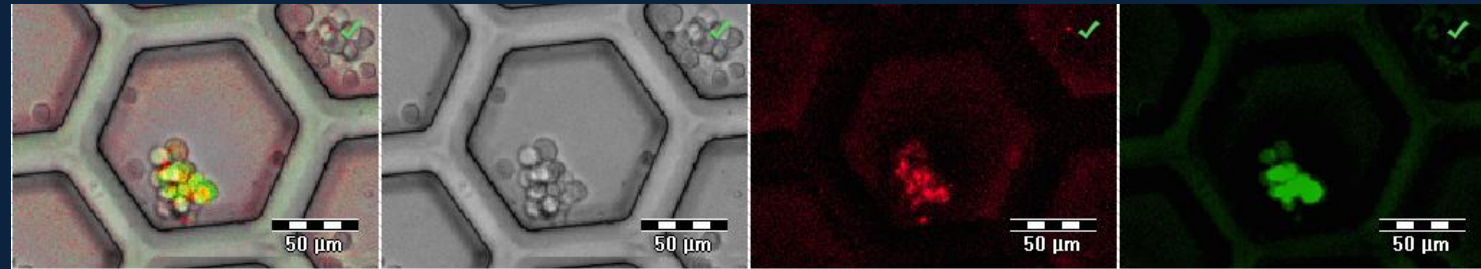


Project #2 – Graduation project

Set-up of a single-cell functional assay

Involved:

- Flow cytometry
- Primary cell culture
- Single cell culture
- Functional studies



Two internship projects with different subjects allowed me to get to know the whole company, introduced me to several new techniques, and broadened my knowledge.

Lisan:

- Got to know the whole organization and have broad knowledge
- Skills from lectures could immediately be trained at the workplace
- Learned a lot about the soft skills during the master's

Ellen

- Portfolio expansion of early antibody discovery
- It has been a truly rewarding experience to collaborate with such bright, enthusiastic young minds

Questions



Contact information



Mailing Address:

ImmunoPrecise Antibodies (Europe) B.V.
Pivot Park – building OP
Kloosterstraat 9
5349 AB Oss, The Netherlands

Dr. Ilse Roodink
General Manager
iroodink@ipatherapeutics.com
www.ipatherapeutics.com