

# Call for SMEs

## HealthChain Follower SMEs

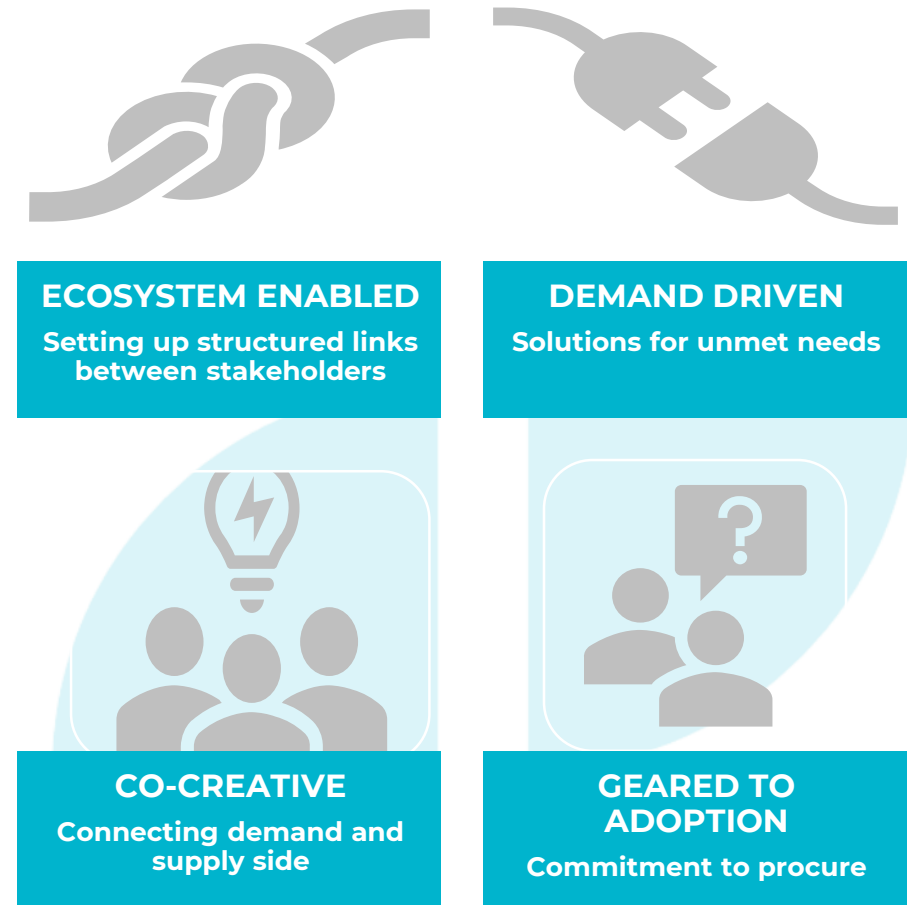
- | Ticbiomed = Coordinator
- | Oost NL Ecosystem Supporter
- | HealthChain Healthcare Organisations representatives
- | HealthChain Leading SMEs representatives



# What is HealthChain?

## A NEW INNOVATION MODEL

- Increases the capacity of healthcare organisations to innovate
- Results in digital solutions with a higher success rate
- Increases and speeds up the internationalisation processes of companies



# 10 regional ecosystems



**Romania**

North-West Romania



**Greece**

Western



**The Netherlands**

East Netherlands



**Belgium**

Flanders



**Croatia**

Primorsko-Goranska



**Portugal**

Centro



**Spain**

Murcia | Navarra | Castilla y León



**Slovenia**

Western



Increasing the capacity of regional innovation ecosystems in emerging regions to participate in global value chains



Region & Challenge	Follower SME Work	Keywords	Region & Challenge	Follower SME Work	Keywords
 <p><b>Servicio Murciano de Salud</b></p> <p>Murcia (Spain)</p>	<p><b>K-control!</b></p> <p>Interdialysis potassium level intensive monitoring</p> <p><b>PASPADOC</b></p> <p>A new holistic way to capacitate patients who suffer chronic pain</p>	<p>Integrate potassium levels with patient lifestyle data via machine learning, design alarm protocols for patients, create a user-friendly interface, and ensure secure data management.</p> <p>Machine learning, nutritional recommendations, usability study, security protocol.</p> <p>Validate chronic pain health resources, integrate wearable and medical device data into an IoT layer, and optimize chronic pain management with patient-friendly documentation.</p> <p>Chronic pain management resources, AI-based personal assistant, IoT, wearable devices integration.</p>	 <p><b>KBC RI</b> KLINIČKI BOLNIČKI CENTAR RIJEKA</p> <p>Primorsko-Goranska (Croatia)</p>	<p><b>FallPredict</b></p> <p>Real-time patient monitoring during independent movements in the Hospital</p> <p><b>MediLink</b></p> <p>Facilitating communication between specialists and family doctors in remote areas</p>	<p>Ensure healthcare regulations compliance focusing on data security and integration, and engage stakeholders via workshops and training sessions for effective implementation and user adoption.</p> <p>Usability, performance testing, functional testing, security and data protection.</p> <p>Ensure communication platform's functionality, user-friendliness, performance, and security for healthcare professionals, guaranteeing accurate operation, optimal performance, and robust security measures.</p> <p>Regulatory compliance, technological support and system enhancement, solution validation, engagement and training.</p>
 <p><b>CHUC</b> CENTRO HOSPITALAR E UNIVERSITÁRIO DE COIMBRA</p> <p>Centro (Portugal)</p>	<p><b>Reabilitar@mente</b></p> <p>Effectiveness of cognitive rehabilitation programs for hospitalized elderly people</p> <p><b>RecoMed</b></p> <p>Boost medication safety in Plastic Surgery and Burns department</p>	<p>Design user-friendly interfaces, ensure usability, document design standards, integrate assessment tools, and create educational videos to promote health literacy in active aging.</p> <p>Visual design, accessibility, responsive design, usability testing.</p> <p>Ensure MediRecon's regulatory compliance, from documentation to testing, navigating audits and certifications for its adoption in healthcare.</p> <p>Regulatory compliance, documentation preparation, Quality Management System (QMS).</p>	 <p><b>Rijnstate</b></p> <p>East Netherlands (The Netherlands)</p>	<p><b>Digicare-Aware</b></p> <p>Creating awareness amongst healthcare professionals about the necessity and possibilities of remote patients monitoring and the Virtual Care Center</p> <p><b>DELSIS</b></p> <p>Determining the extent of lifestyle support to increase self-management</p>	<p>Produce engaging designs for monitoring@home, adhering to Rijnstate's guidelines, with expertise in change communication, user experience, and GDPR compliance.</p> <p>Design, user experience (UX), GDPR compliance.</p> <p>Boost patient engagement and market exploration, offering expertise in user experience enhancement and comprehensive market analysis for AI-driven healthcare solutions.</p> <p>Personalisation, user experience, market analysis for triage tools.</p>
 <p><b>KIRURŠKI SANATORIJ Rožna dolina</b></p> <p>Western (Slovenia)</p>	<p><b>HIPRO</b></p> <p>Improving patients' safety and empowerment after fast-tracking hip surgery</p> <p><b>MEPRO</b></p> <p>Improving patients' safety by assessing mental distress after surgery</p>	<p>Contribute to co-creation, design app features with smart-band integration and ensure secure data access for physicians.</p> <p>Mobile app, HL7 FHIR infrastructure, user interface for clinicians, privacy and security.</p> <p>Oversee end-to-end app development, including device integration, security, app distribution, co-creation strategies, community engagement and GDPR compliance checks.</p> <p>App development, device integration, GDPR compliance.</p>			

<https://healthchain-i3.eu/call-smes/>

Challenger	Supporter	Mirror Region	Challenge	Challenge short description
 <b>Los Montalvos Hospital</b>	 <b>NAVARRABIOMED</b> <small>FUNDACIÓN MIGUEL SERVET</small>	<b>Navarra (Spain)</b>	<a href="#"><u>OPER-ART</u></a>	Addressing the uncertainty challenges of radiotherapy through personalised 3D molds used in radiotherapy and brachytherapy.
	 <b>FUNDACIÓN intras</b>	<b>Castilla y León (Spain)</b>	<a href="#"><u>iMOTION</u></a>	Virtual assistant for voice-activated emotional state recognition in palliative care patients.
 <b>GENIKO NOΣOKOMEIO HΛEIAS</b>	 <b>DOCTORSHELLO</b> <small>COLLABORATIVE TELEMEDICINE</small>	<b>Western (Greece)</b>	<a href="#"><u>TRIME</u></a>	Multi-stage monitoring triage at home for Cardiovascular Diseases (CVDs).
 <b>az groeninge kortrijk</b>	 <b>MEDVIA</b> <small>The innovation cluster for better health</small>	<b>Flanders (Belgium)</b>	<a href="#"><u>MoveBuddy</u></a>	Intrinsically motivate obese children with an innovative and child-friendly digital solution that promotes long-term physical activity through gamification.
 <b>Medisprof Cancer Center</b>	 <b>FRESHBLOOD</b>	<b>Northwest (Romania)</b>	<a href="#"><u>AITRIS</u></a>	Automated Imagery Tool Results for Diagnostic and Stadiation.

## Who can apply?

### HEALTHCHAIN LAUNCHES OPEN CALL: €50,000



**Call for  
Follower SMEs**

Funding up to **€50k**



**Mirror Region  
call for SMEs**

Funding up to **€50k**

#### TYPE

Small and medium-sized enterprises (SMEs).

#### GEOGRAPHY

HealthChain is looking for SMEs based within regions that are already represented in the HealthChain consortium. They must be legally established:

- EITHER in a founding HealthChain ecosystem, different to the region where the Challenger is based: Murcia (Spain), Catalonia (Spain), Centro (Portugal), North (Portugal), any region in Slovenia, any region in Croatia, East Netherlands (The Netherlands) and West Netherlands (The Netherlands);
- OR in the Mirror Regions: Western Greece, Navarra (Spain), Castilla y León (Spain), Flanders (Belgium) and Northwest Romania.



## READ

The Call for SMEs documents:  
<https://healthchain-i3.eu/call-smes/>



## ASK

In case of questions, please contact us through the following channels:

[F6S blog \(Online Q&A\)](#)  
F6S support team:  
[support@f6s.com](mailto:support@f6s.com)  
HealthChain Help Desk:  
[hello@healthchain-i3.eu](mailto:hello@healthchain-i3.eu)



## FILL IN

Your proposal following the template provided.



## SUBMIT

Via the F6S platform  
before 5<sup>th</sup> August 2024



- Oost NL Ecosystem Supporter
- Niek Wellink | Oost NL <niek.wellink@oostnl.nl>  
+31 (0) 6 24 13 37 07
- Jutta Wirth | Oost NL <jutta.wirth@oostnl.nl>  
+31 (0) 6 41 68 61 98

Visit HealthChain I3 on:   

**[www.healthchain-i3.eu](http://www.healthchain-i3.eu)**



**Co-funded by  
the European Union**

# Thank you!