



From single asset to a portfolio model

WHAT DO DWARFS HAVE TO DO WITH CANCER?



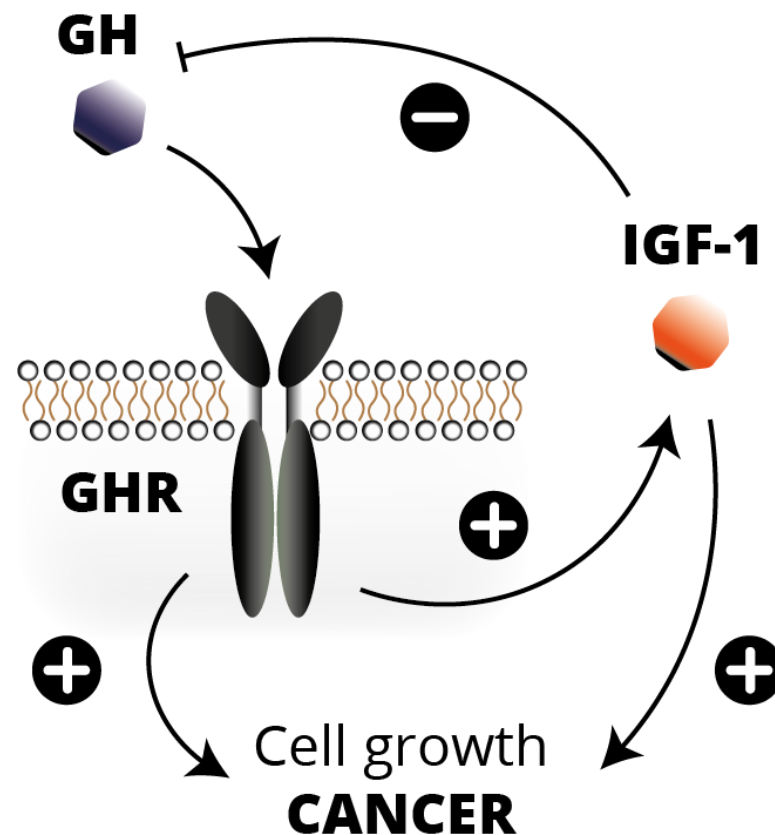
“

Laron dwarfism: a rare mutation in the GHR gene

”

TARGETING GROWTH

- **Growth hormone (GH)** and **Insulin-like growth factor 1 (IGF-1)** are major driver of cancer.
- Central in the GH/IGF-1 axis is the **GH receptor (GHR)**. GHR is a promising molecular target for cancer therapeutics – however, current approaches have failed.
- BIMINI **identified small molecules** that affect the synthesis of GHR at the translational level.
- Based on **pioneering work of Prof. Ger Strous** on the GH/IGF-1 axis.
- BIMINI's approach **effectively mimics nature** as seen in Laron Syndrome – that are protected against cancer, metabolic disorders and ageing.



30+ years of research by Prof. Emeritus Ger Strous (UMC Utrecht)

CLASSICAL ROUTE - HIT-TO-LEAD SELECTION



- **>39k compounds screened in primary cell-based assay (novel in vitro cell assays)**
- **3 best hits identified with BM001 as our lead compound**
- **BM001** removes GHR from the ER and PM, and reduces downstream signalling
- Promising data for **BM001** on CRC, lung, skin, and bone cancer cell lines (IC₅₀ = 70-100 nM)
- Selection of **CRC as the first showcase:**
 - One of the most sensitive cell lines in in-vitro results
 - Established role of GH/IGF-1 axis
 - Clear unmet need: ~30% refractory patients and poor response rates

38.720 small molecules

109 primary hits

10 primary hits + **122** analogues

17 hits

2 hits + **109** new analogues

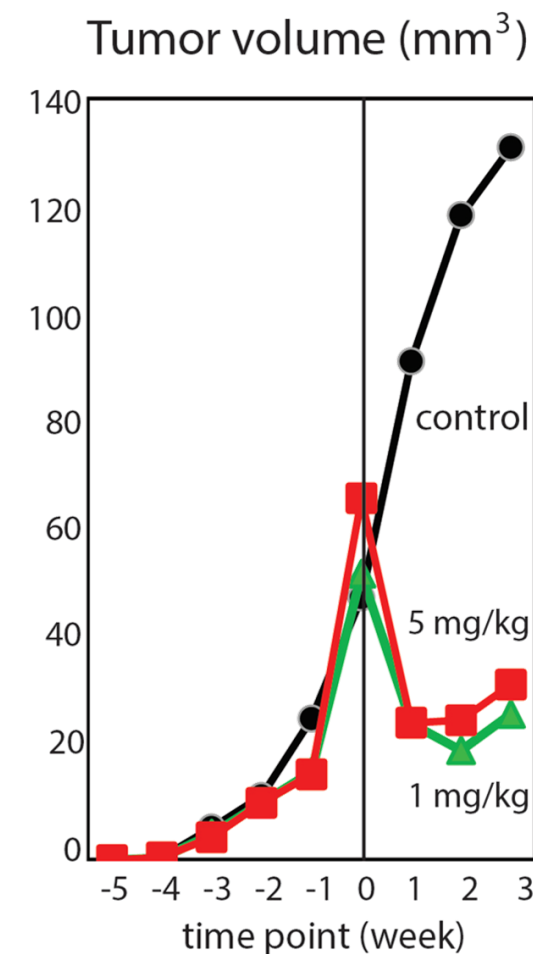
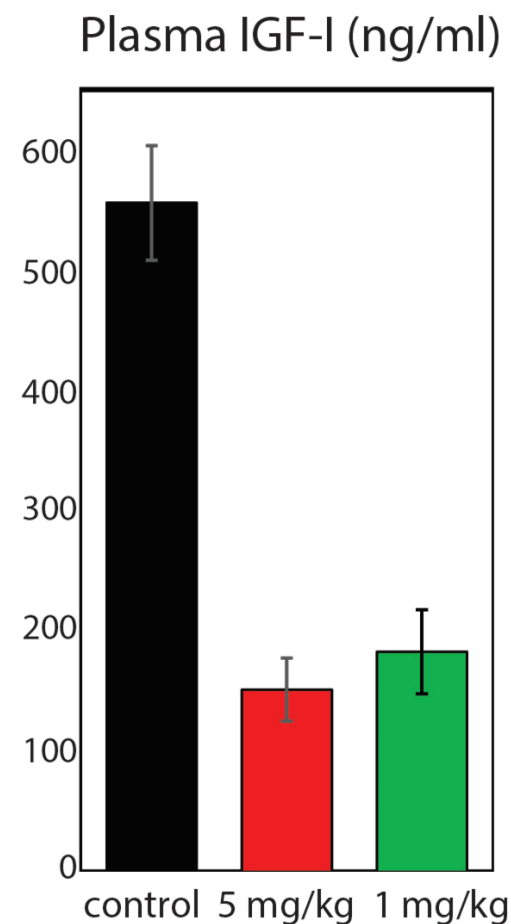
14 hits

3 best hits

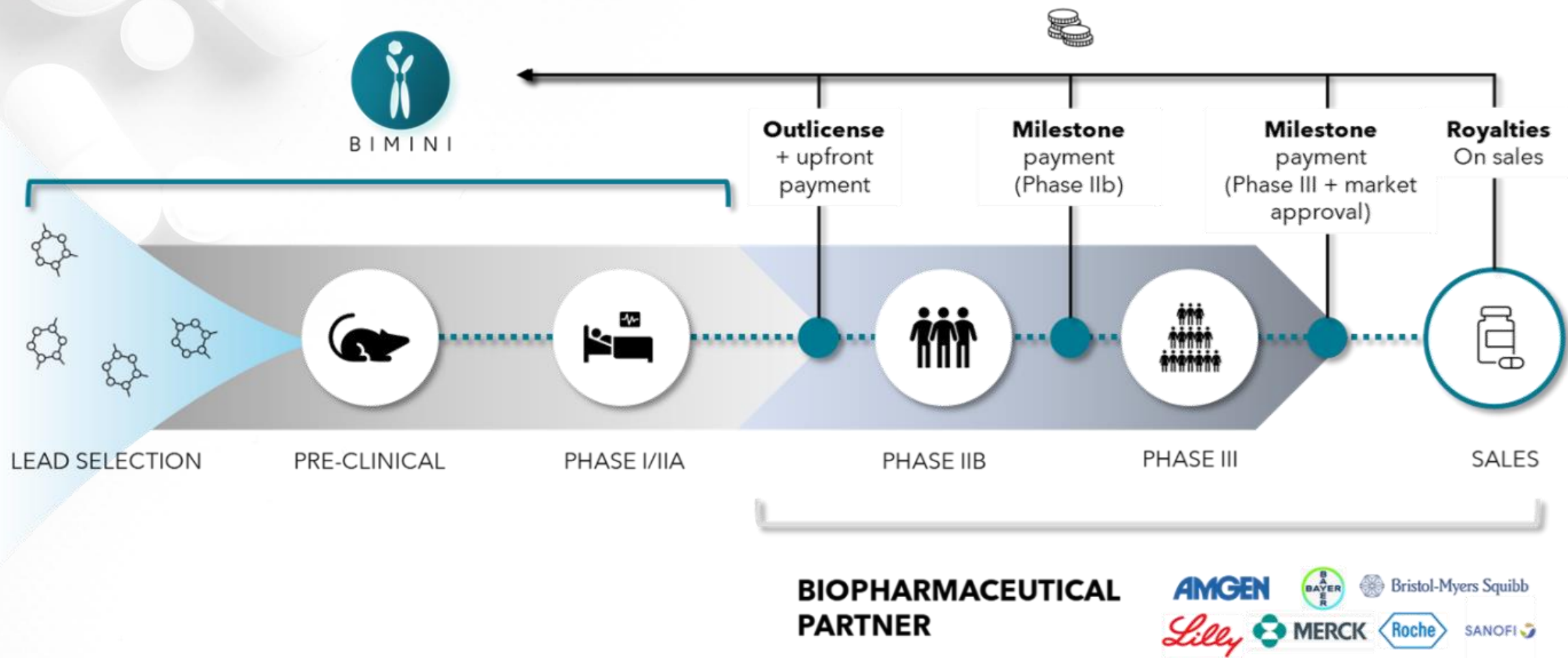
PRE-CLINICAL VALIDATION



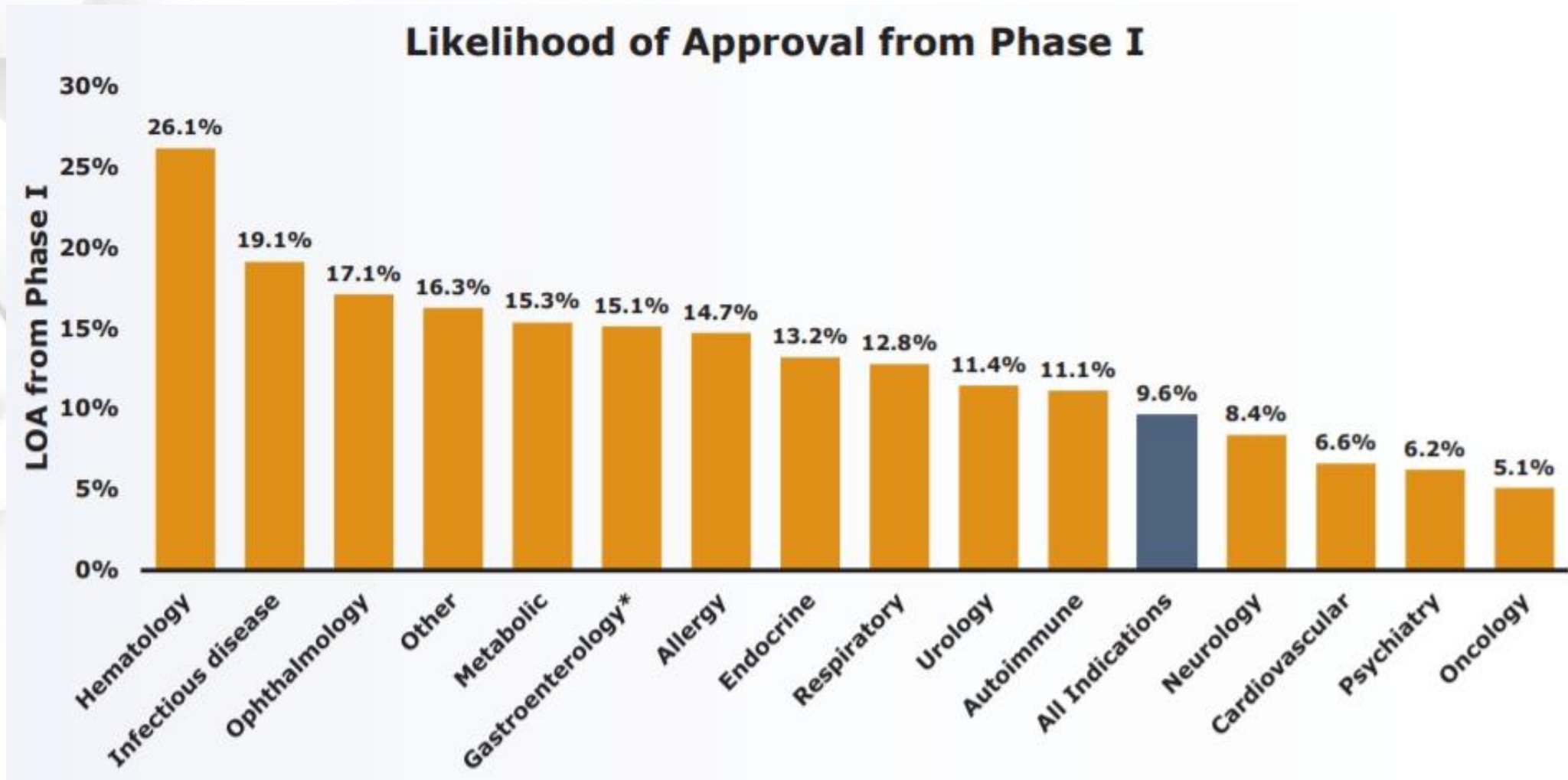
- **Tumor suppression** in a xenografted TNBC mouse model
- Sustained **reduction in serum IGF-1 levels**
- **Excellent tolerance** after 3 weeks of high dosing (5mg/kg), no decrease in body weight
- Necropsy confirmed **internal organ safety**.
- Initial dog safety studies show **positive results** with high bioavailability.
- In vivo validation in a mouse xenograft **CRC model showed strong tumor growth inhibition**
- Compound is now being progressed towards late-preclinical development



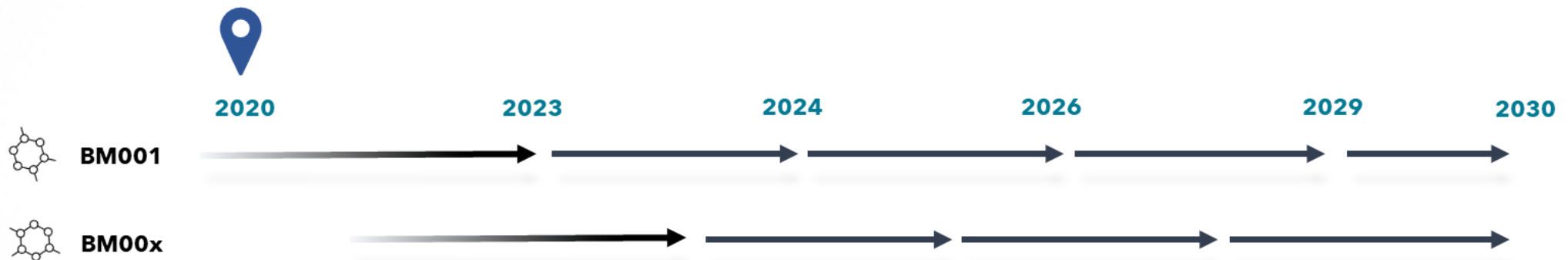
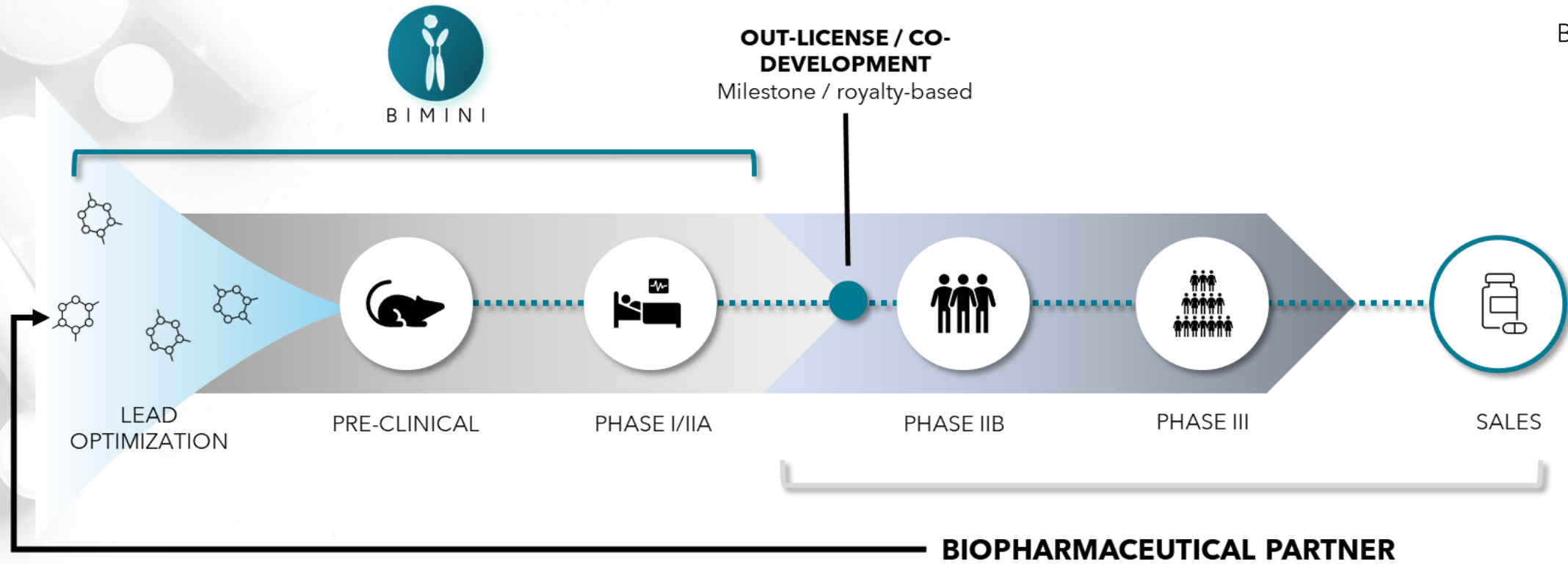
TRADITIONAL BUSINESS MODEL



BIOTECH - A RISKY BUSINESS



OUR BUSINESS MODEL





A new portfolio model for biotech

January 29, 2021 | Article

By Joachim Bleys, Jonathan Coravos, [Edd Fleming](#), and [David Quigley](#)

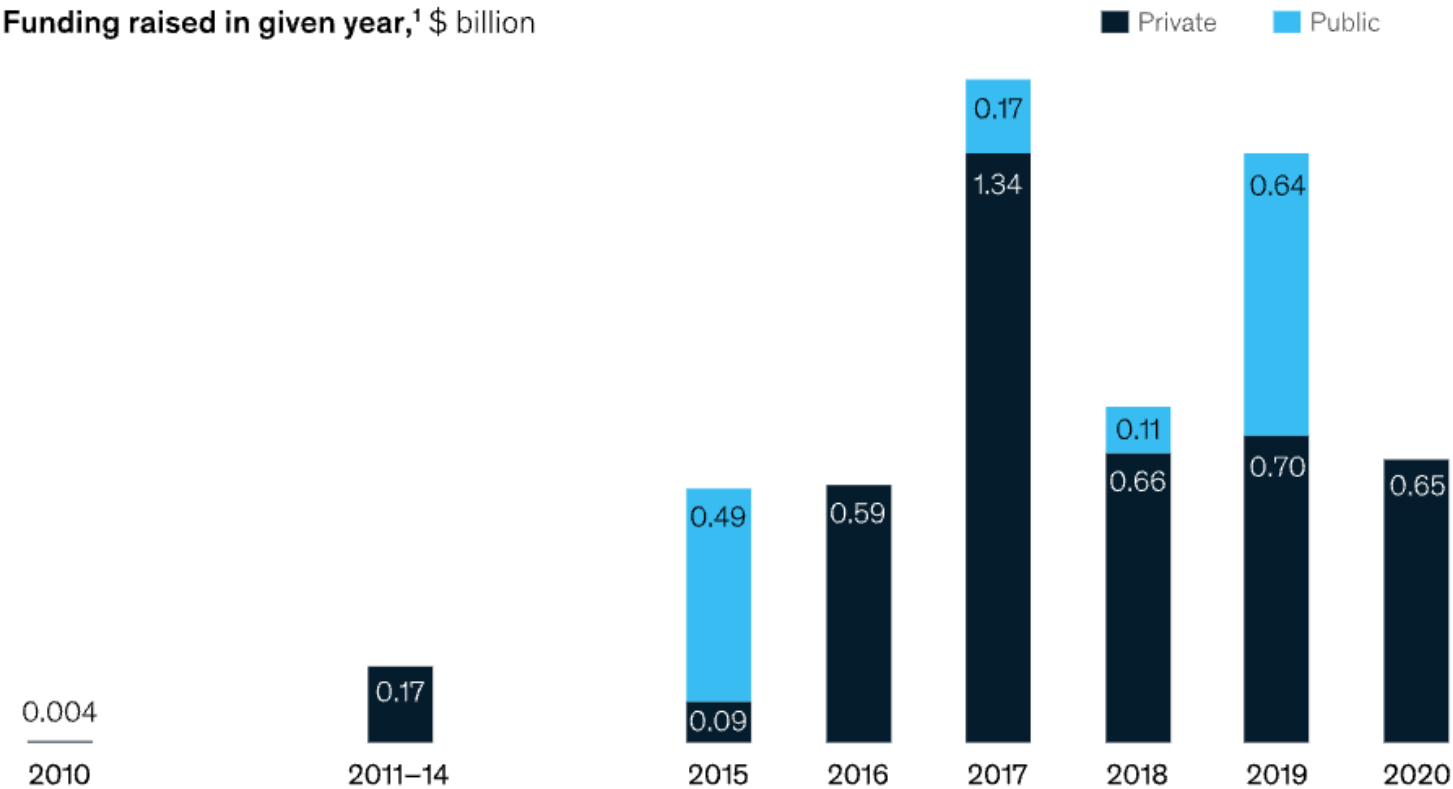




The biotech portfolio model has emerged over the past decade, with more than \$5.5 billion in capital raised in the past six years.



Funding raised in given year,¹ \$ billion



2001-10
Founded
PureTech
Health
Biohaven
Roivant
BridgeBio

2011-14
Notable
funding
raised
Roivant
(PE)
PureTech
(growth
stage)

2015
Founded
Gossamer
Bio
**Notable
funding
raised**
PureTech
Health (IPO)²

2016
Notable
funding
raised
Roivant
(PE)
Biohaven
(venture)

2017
Notable
funding
raised
Biohaven
(IPO)
Roivant (PE,
\$1.1B from
Softbank)

2018
Notable
funding
raised
Gossamer
(Series A
and B)
Roivant
(PE)

2019
Founded
ElevateBio
**Notable funding
raised**
Gossamer Bio
(IPO)
BridgeBio (IPO)

2020
Notable
funding
raised
BridgeBio
(post-IPO
debt)
ElevateBio
(Series B)

OUR MISSION & VISION

**WE AIM TO
ACCELERATE THE
DEVELOPMENT
OF NOVEL
THERAPEUTICS
FOR MAJOR
UNMET MEDICAL
NEEDS**



WHAT

Bring innovative therapeutic products to the market in collaboration with leading pharma and academic partners.



HOW

By collaborating with selected high quality drug development service providers and leveraging access to capital and non-dilutive funding instruments we can help:

- Research institutes to develop targets and early-stage drugs
- Industrial partners to de-risk drug development projects that are left on the shelf

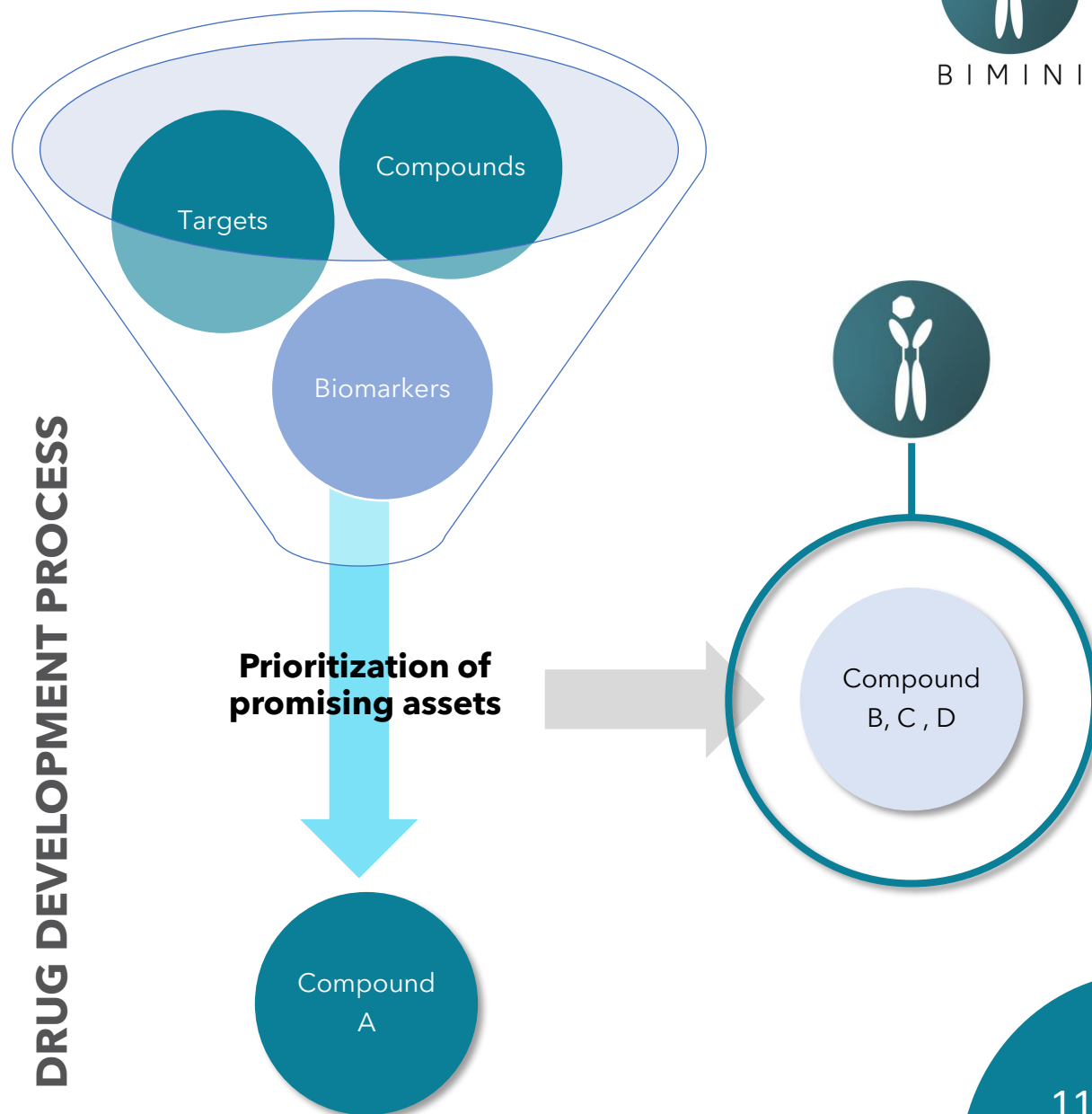


WHY

By collaborating we can make a bigger impact on society and tackle the major unmet medical needs.

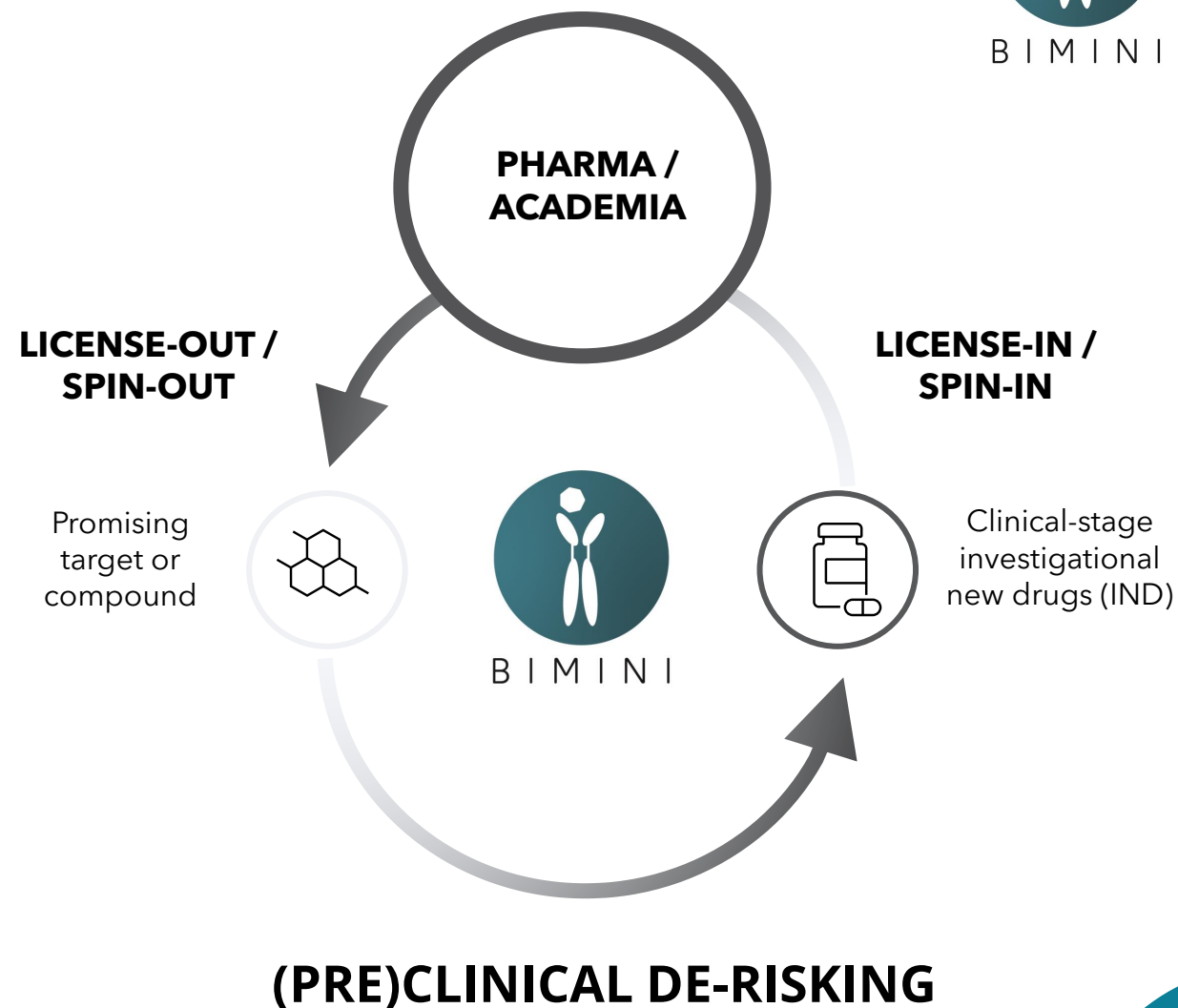
BUSINESS OPPORTUNITY

- Organizations often **face challenges** in the development of novel therapeutics in a risk-averse setting.
- **Prioritization of promising leads** and assets is required due to limitations in time and/or resources.
- Potential promising technology is **not being further developed**, or significantly delayed.
- Delivery of novel therapeutics to the patients is **delayed or not possible**, resulting in loss of life, loss in potential revenues and a lower societal impact.
- BIMINI aims to partner with pharma ("BIOTECH-4-PHARMA") to tackle this **missed business opportunity**.

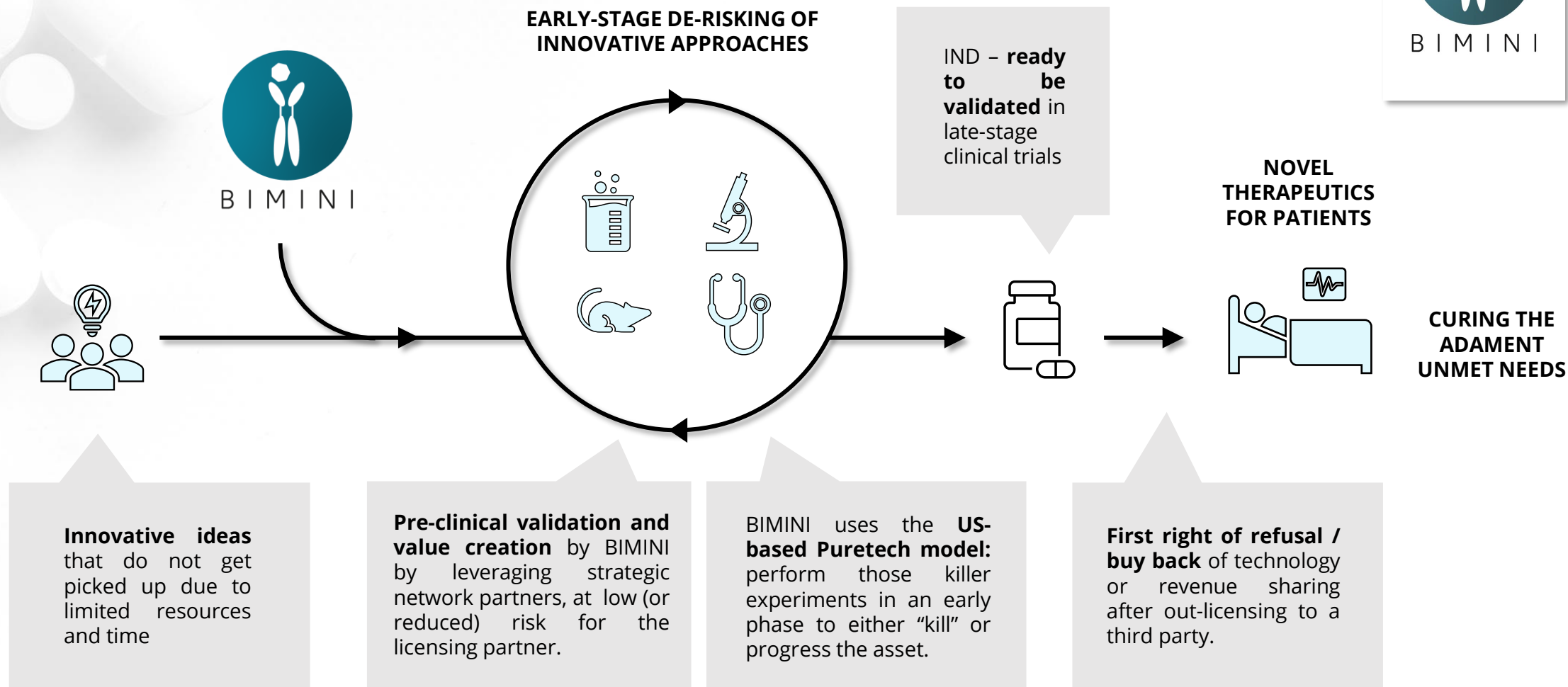


OUR STRATEGY

- **In-license** high-risk/high-reward novel technologies: either from pharma or academia
- **De-risk the early development** steps in early drug development for pharmaceutical companies, called the "*Biotech-4-Pharma*" model
- **Together bring novel therapeutics successfully to the market:**
 - Help fill your pipeline of late-stage products;
 - Maximize your portfolio value;
- Accelerate drug development **with BIMINI's validated value chain**
- **Build a pipeline** of highly promising targets and compounds, making more drugs available for current **unmet medical needs**



THE APPROACH



BIMINI - A WINNING RECIPE

LEVERAGE
EXTERNAL
EXPERTISE AND
RESOURCES TO
BRING NOVEL
THERAPEUTICS
TO PATIENTS



B I M I N I

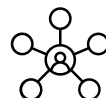
USPs



Strong team with a **proven track-record** in drug development and successfully bringing products to market.



Expert and validated partner network of high-quality boutique companies to **cover the full value chain** of pre-clinical and early clinical development at reduced costs and risks



BIMINI is a fast and adaptable network organization that leverages expertise of a broad network of **established key-opinion-leaders** in different fields



Expertise in **strategic funding** (dilutive and non-dilutive) powered by seed funds and biotech consultants to smartly leverage financing to accelerate drug development



Limited liability and **priority buy-back option** for pharma or academic partner

THE TEAM

- BIMINI'S team - a balance of science and business
- A combination of scientific KOLs, experienced business experts and young entrepreneurs:
 - CEO: **Digvijay Gahtory**, PhD
 - COO: **Maurits van den Nieuwboer**, PhD
 - CSO: **Prof. Ger Strous**, PhD
- Advisory board - expertise in medicinal chemistry, preclinical drug development, clinical oncology and out-licensing/ corporate partnering.
 - **Henk Viëtor**, PhD, MD - serial entrepreneur
 - **Ernst Elhorst**, MSc - serial entrepreneur
 - **Prof. Marc Peeters**, PhD - Head oncology UZA
 - **Ir. Jan Mol**, PhD - Pre-clinical expert
 - **Peter Maas**, MSc - MedChem expert / manager Specs
 - **Judith Smit**, PhD - Financial expert / CEO consulting group
 - **Carine van de Brink** - Legal expert / attorney at law



JOIN OUR SUCCESS



UNIQ invests €200,000 in novel cancer therapeutics startup BIMINI Biotech

november 26, 2020

Leiden, 26 November 2020 – BIMINI Biotech, an innovative therapeutics startup that develops new cancer drugs, has secured an investment of €200,000 from proof-of-concept fund UNIQ to further develop its technology. The company aims to use the growth hormone receptor to uniquely inhibit cancer cell... Lees verder »



INNOWIDE



BIMINI

Thera



taylor.





B I M I N I

THANK YOU

For more information contact:

DR. DIGVIJAY GAHTORY

E: digvijay.gahtory@biminibiotech.nl

DR. MAURITS VAN DEN NIEUWBOER

E: maurits.vandennieuwboer@biminibiotech.nl

www.biminibiotech.nl